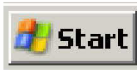


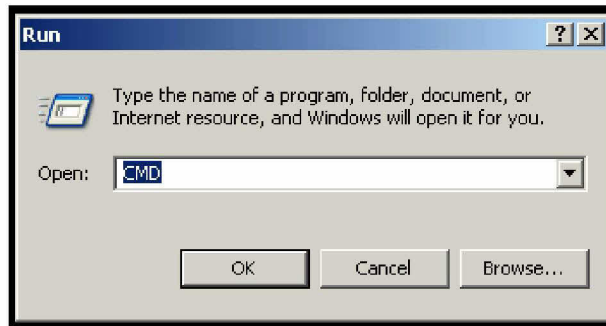
Kansas Fuel Tax

File Transfer Procedure

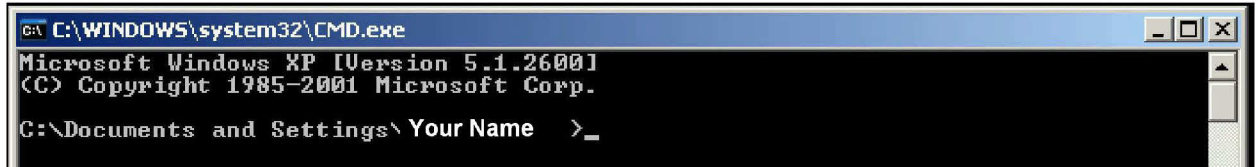
(DOS)

After converting your file to the EDI format you are now ready to transfer it to the Kansas Department of Revenue.

1. Left click on the start button ; a menu will appear; left click on Run...
2. You now will see a text field box like the one below. Type in **cmd** then left click on the **OK** button.



3. Now you should see a DOS page; it should look something like the picture below; at the end of the text there will be a flashing cursor Type in **cd** and hit enter.



4. You will now type in where the EDI file is.
 - a. If you are running FUEL TAX you will type after the C:\ **cd FUEL TAX\Data** then hit enter. Note: (type the file path as shown using capital letters where used).
 - b. If you are running FuelTaxE85 you will type after the C:\ **cd FuelTaxE85\Data** then hit enter. Note: (type the file path as shown using capital letters where used).
 - c. If you are running FuelTaxE85 Excel you will type after the C:\ **cd Program File\TMS\FuelTax\Data** then hit enter. Note: (type the file path as shown using capital letters where used).

